

Amsterdam

# Ceramiquelaan 319

*CODICE OGGETTO: NL24185509*



PREZZO D'ACQUISTO: 1.150.000 EUR • SUPERFICIE NETTA: ca. 146 m<sup>2</sup> • VANI: 4

CODICE OGGETTO: NL24185509 - 1031KG Amsterdam

- A colpo d'occhio
- La proprietà
- Una prima impressione
- Dettagli dei servizi
- Tutto sulla posizione
- Ulteriori informazioni
- Partner di contatto

CODICE OGGETTO: NL24185509 - 1031KG Amsterdam

## A colpo d'occhio

CODICE OGGETTO	NL24185509
Superficie netta	ca. 146 m²
Vani	4
Camere da letto	3
Bagni	1
Anno di costruzione	2021

Prezzo d'acquisto	1.150.000 EUR
Appartamento	Appartamento

CODICE OGGETTO: NL24185509 - 1031KG Amsterdam

## La proprietà



CODICE OGGETTO: NL24185509 - 1031KG Amsterdam

## La proprietà



CODICE OGGETTO: NL24185509 - 1031KG Amsterdam

## La proprietà



CODICE OGGETTO: NL24185509 - 1031KG Amsterdam

## La proprietà



CODICE OGGETTO: NL24185509 - 1031KG Amsterdam

## La proprietà



CODICE OGGETTO: NL24185509 - 1031KG Amsterdam

## La proprietà



CODICE OGGETTO: NL24185509 - 1031KG Amsterdam

## La proprietà



CODICE OGGETTO: NL24185509 - 1031KG Amsterdam

## La proprietà



CODICE OGGETTO: NL24185509 - 1031KG Amsterdam

## La proprietà



CODICE OGGETTO: NL24185509 - 1031KG Amsterdam

## La proprietà



CODICE OGGETTO: NL24185509 - 1031KG Amsterdam

## La proprietà



CODICE OGGETTO: NL24185509 - 1031KG Amsterdam

## La proprietà



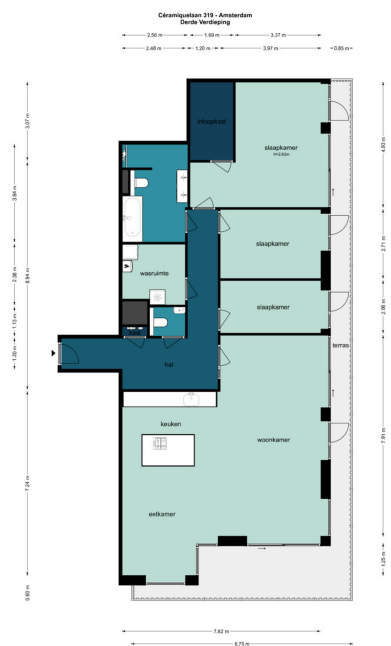
CODICE OGGETTO: NL24185509 - 1031KG Amsterdam

## La proprietà



CODICE OGGETTO: NL24185509 - 1031KG Amsterdam

## La proprietà



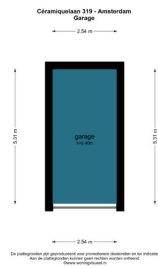
De afmetingen zijn afgerond met een precisie van één decimaal.  
Het is mogelijk dat de afmetingen van de werkelijke situatie afwijken van de afmetingen in de tekening.



De afmetingen zijn afgerond met een precisie van één decimaal.  
Het is mogelijk dat de afmetingen van de werkelijke situatie afwijken van de afmetingen in de tekening.

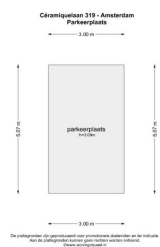
CODICE OGGETTO: NL24185509 - 1031KG Amsterdam

## La proprietà



CODICE OGGETTO: NL24185509 - 1031KG Amsterdam

## La proprietà



**CODICE OGGETTO: NL24185509 - 1031KG Amsterdam**

## Una prima impressione

Ceramiquelaan 319 On the third floor of a remarkable building with stunning architecture in Amsterdam Noord, "THE WING," lies this spacious CORNER apartment of 146 m<sup>2</sup>, featuring a 30 m<sup>2</sup> wraparound terrace with a view of the Schegpark, which is currently under construction. There is the option to purchase a parking space in the basement of the building, with or without a charging station. The cost for the parking space with a charging station is €75,000, and without a charging station €50,000.

**CODICE OGGETTO: NL24185509 - 1031KG Amsterdam**

## Dettagli dei servizi

### Layout:

Access the corner apartment through the spectacular shared entrance. All rooms can be reached from the hallway. This is an exceptionally spacious apartment with a generous living area, a Siematic island kitchen equipped with a Bora cooktop, Quooker, and Siemens oven and microwave. From the living-dining area, you can access the terrace, which enjoys delightful afternoon and evening sun.

The master bedroom features a luxurious walk-in closet, and from this room, you can step directly onto the balcony with unobstructed views of the Shell Tower and the 'Schegpark'. The bathroom is highly luxurious, finished with high-quality fixtures and tiling, and includes a bathtub, walk-in shower, double sink, and toilet. There is also a separate luxurious toilet in the hallway. Finally, there is a storage area for the washing machine, dryer, and technical installations.

The building, The Wing, has a striking fold in its structure. The architect chose this design for a reason; it was inspired by the location by Schegpark and views of the IJ. The aim was to create as much view as possible. Bringing the outside in was the idea of Paul Stavert from Powerhouse Company. The horizontal lines emphasize the grace of the balconies, which playfully alternate between straight and rounded corners. Additionally, the façade steps back at certain points, making some balconies particularly deep. The Wing has an Italian flair, due to the use of natural stone in the façade.

**CODICE OGGETTO: NL24185509 - 1031KG Amsterdam**

## Tutto sulla posizione

**LOCATION** The Wing is situated in a unique location, between the dynamic Schegpark and the green, central neighborhood square. The shape of the building, resembling a wing, creates a unique dynamic between nature and architecture. The general garden of The Wing is located by the Schegpark, allowing every resident to enjoy this unique spot with views of the EYE Film Museum and the A'DAM Tower. The garden is beautifully designed by landscape architect Paul Plambeck from Buro Sant and Co, featuring a large characteristic tree, various grasses and flowering plants, a pathway, and a custom concrete seating area.

**CODICE OGGETTO: NL24185509 - 1031KG Amsterdam**

## Ulteriori informazioni

FEATURES - Living area of 146 m²; - 3 bedrooms; - Luxurious Siematic kitchen; - High-quality sanitary ware and tiling; - Many windows; - The entire apartment is equipped with underfloor heating and cooling; - Option to purchase parking spaces with/without charging station; (with €75,000, without €50,000); - Internal storage room; - VvE service costs € 301,72, - per month; - Leasehold perpetually bought off;

**CODICE OGGETTO: NL24185509 - 1031KG Amsterdam**

## Partner di contatto

Per ulteriori informazioni, si prega di contattare la persona di riferimento:

Joan Dik, Marie Christine Lodewijk & Elisabeth van Zijverden

---

De Lairesestraat 51 Amsterdam

**E-Mail:** [info@von-poll.nl](mailto:info@von-poll.nl)

*To Disclaimer of von Poll Immobilien GmbH*

---

[www.von-poll.com](http://www.von-poll.com)